



DENTAL RESIN & 3D PRINTER MANUFACTURER

www.piocreat3d.com



Shenzhen PioCreat 3D Technology Co.,Ltd.

📍 19F, JinXiuHongDu Building, Meilong Blvd, Longhua Dist, Shenzhen, China 518131

☎ Tel: +86 0755-2103-9743 / +86 199 2521 7796

✉ Technical support: after@piocreat3d.com

📧 Inquiry email: info@piocreat3d.com



Designed specifically for dental

www.pionext3d.com

OEM/ODM

01 COMPANY PROFILE

Company profile ● 01-01

02 PRODUCT INTRODUCTION

Product introduction ● 02-14

— PRINTER

Dental 3d printer ● 02-07

— P-P

Post-processing ● 08-09

— RESIN

Dental resin ● 10-14

03 PRINT PARAMETERS

Parameters ● 15-16

Dental 405nm 3D printing PRODUCT FAMILY



The PiNext series is a sub-brand of Piocreat that includes LCD & DLP printers, and dental resins. Representative products for dental applications includes DJ68, DJ89PLUS, D158, D160, D150, D190, UV02, CD-X3, etc.

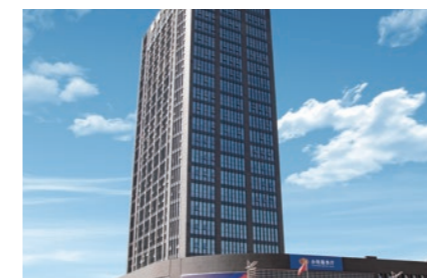
Complete certification:

PioNext series products have passed FCC certification, RoHS certificate, UL certification, CE certification, and high-tech product certification. All products have passed scientific and technological appraisal and have product quality inspection.



Strong production capacity:

With more than 2,000 employees and 50,000 square meters of group production space, we are well positioned to meet the needs of our customers for equipment orders and processing services.



Company headquarters



Adequate inventory



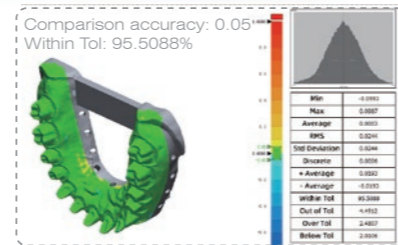
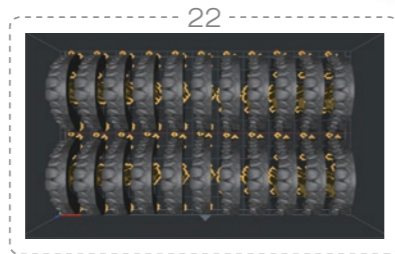
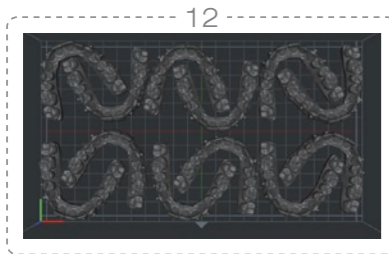
Equipment production department

DJ89PLUS

8K 10.3" LCD 3D printer



- 8K 29μm pixel size** ●
10.3" 8K(7680*4320px) monochrome screen
precise sculpting of model details
- Heating chamber** ●
chamber heating(20-35°C)
- Automatic feeding** ●
Avoid lack of resin material
- Stable Z-axis structure** ●
Dual linear guide rails + ball screw



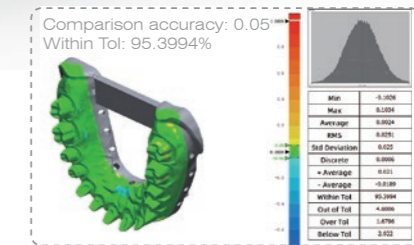
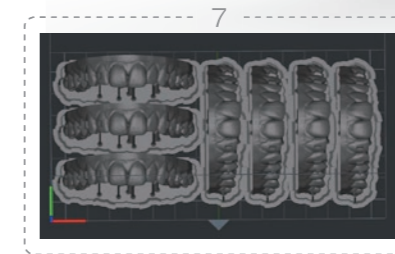
SPECIFICATIONS	DJ89PLUS
Molding tech	LCD
Print size	228×128×100mm
Machine size	450×290×500mm
Print speed	Max.60mm/h
Layer thickness	0.01-0.1mm
XY axis accuracy	29μm
Printing screen	10.3 inch, 8K monochrome
Rated voltage	100-120/200-240V~, 50/60Hz
Slicer	Piocreac BOX (Win7 or above X64, Mac)
Language	13 languages
N.W.	21.75KG
G.W.	26.28KG

DJ68

9K 6.8" LCD 3D printer



- 9K 18μm pixel size** ●
6.8" 9K(8520*4320px) monochrome screen
precise sculpting of model details
- Integral Light Source 3.0** ●
Professional exposure has evolved,
with 90%+ irradiation uniformity
- Using a mask image** ●
Ensure that the models produced by the entire
printing platform have consistently high quality
- Stable Z-axis structure** ●
Dual linear guide rails + T-shaped screw



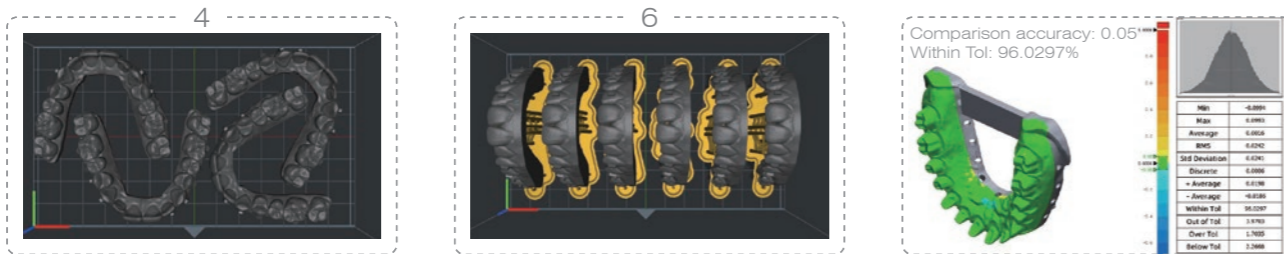
SPECIFICATIONS	DJ68
Molding tech	LCD
Print size	153×77×160mm
Machine size	221×221×404mm
Print speed	Max.60mm/h
Layer thickness	0.01-0.1mm
XY axis accuracy	18μm
Printing screen	6.8 inch, 9K monochrome
Rated voltage	AC100-240V~, 50/60Hz
Slicer	Piocreac BOX (Win7 or above X64, Mac)
Language	13 languages
N.W.	6.6KG
G.W.	8.1KG

D150

Adjustable light intensity: 6000-20000 $\mu\text{w}/\text{cm}^2$



- Fast print**
Print speed up to 80mm/h
1920*1080px
- High speed release film**
Less release resistance
higher printing success rate
- Adjustable light intensity**
Reduce exposure time
- Light engine life 30,000+ hours**



SPECIFICATIONS	D150
Molding tech	DLP
Print size	144×81×100mm
Machine size	330×300×675mm
Print speed	Max.80mm/h
Layer thickness	0.01-0.1mm
Pixel size	75 μm
Rated voltage	100-120/200-240V~, 50/60Hz
Slicer	Piocrat BOX (Win7 or above X64, Mac)
Language	13 languages
N.W.	22.11KG
G.W.	26.5KG

D158

Texas instruments digital micromirror technology



- Automatic lifting cover**
Finger touch lifting
- 62 μm pixel size**
2560*1440px
- High speed release film**
Less release resistance
higher printing success rate
- Stable Z-axis structure**
Dual linear guide rails + ball screw



SPECIFICATIONS	D158
Molding tech	DLP
Print size	158×89×100mm
Machine size	280×280×587mm
Print speed	Max.60mm/h
Layer thickness	0.01-0.1mm
Pixel size	62 μm
Rated voltage	AC100-240V, 50/60Hz
Slicer	Piocrat BOX (Win7 or above X64, Mac)
Language	13 languages
N.W.	13KG
G.W.	15KG

D160

Texas instruments digital micromirror technology



62µm pixel size

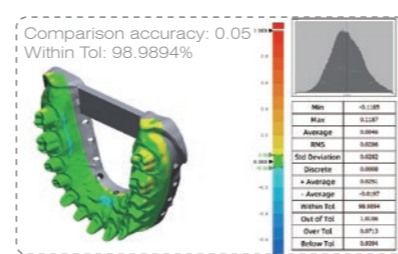
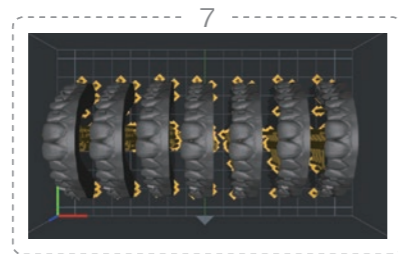
2560*1440px

High speed release film

Less release resistance
higher printing success rate

Stable Z-axis structure

Dual linear guide rails + ball screw



SPECIFICATIONS	D160
Molding tech	DLP
Print size	158×89×100mm
Machine size	280×264×573mm
Print speed	Max.60mm/h
Layer thickness	0.01-0.1mm
Pixel size	62µm
Rated voltage	AC100-240V, 50/60Hz
Slicer	Piocrat BOX (Win7 or above X64, Mac)
Language	13 languages
N.W.	14KG
G.W.	18.65KG

D190

4K DLP 3D printer for dental



High-precision 4K DLP

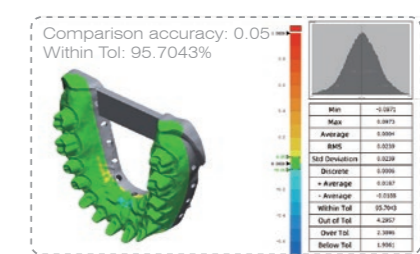
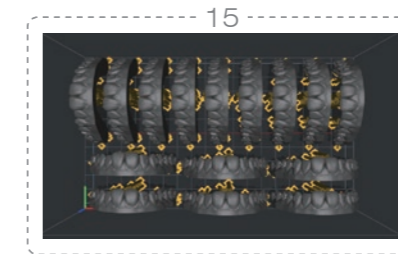
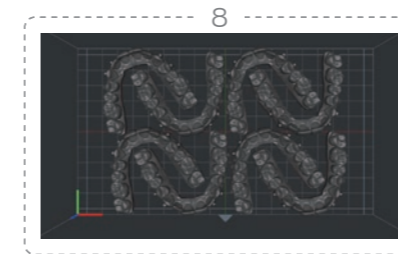
3840*2160px

High stability

Very high print success rate.

Strong Z-axis lifting power

57 Stepper motor continuously outputs lifting power



SPECIFICATIONS	D190
Molding tech	DLP
Print size	192×108×100mm
Machine size	330×300×675mm
Print speed	Max.60mm/h
Layer thickness	0.01-0.1mm
Pixel size	50µm
Rated voltage	AC100-240V, 50/60 Hz
Slicer	Piocrat BOX (Win7 or above X64, Mac)
Language	13 languages
N.W.	21KG
G.W.	25KG

UV02

High speed curing machine adjustable light intensity



Fast curing

Curing usually takes 1-5 minutes, reduces distortion due to post-cure exotherm.

Adjustable light power

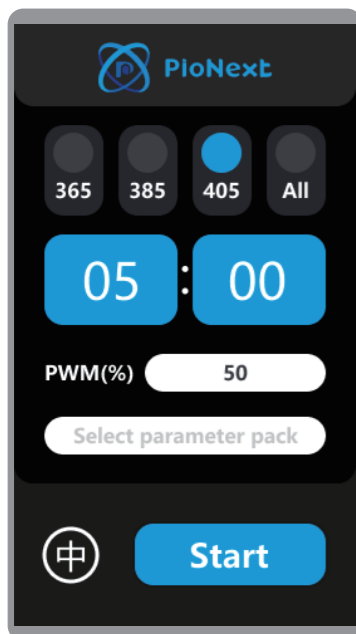
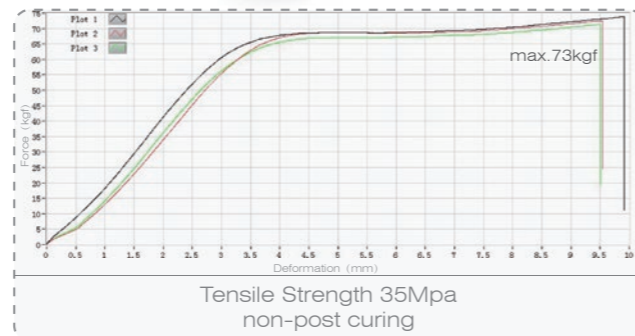
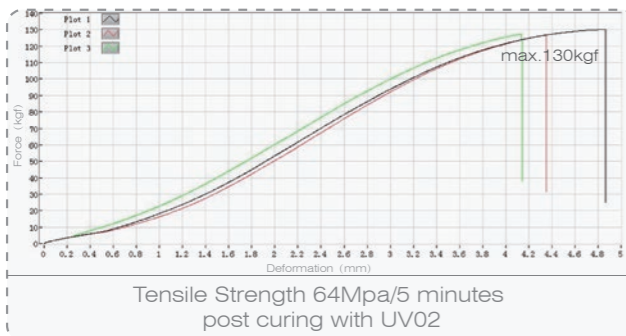
Adjustable light intensity percentage value 5%-100%

Adjustable wave length

365nm / 385nm / 405nm customizable

Presets and customizable cure settings

8 groups of data



SPECIFICATIONS	UV02
Machine properties	High speed UV curing
Machine color	White
Curing size	D180×H120mm
Machine Size	366×300×250mm
Package Size	464×386×334mm
Rated Power	360W
Input Voltage	100-120V~/200-240V~,50-60Hz
Adjustable light intensity ratio	5-100%
Curing optional time	00:01 - 30:00(Max.30min)
N.W.	11KG
G.W.	14KG

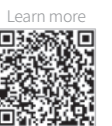
UV02 Recommended Curing Parameter

Resin model	Wavelength	Percentage of Light Intensity	Recommended time	curing with water
PN-model	385、405nm	100%	2 (1,5) min	Yes
PN-model 2.0	385、405nm	80%	2 (1,5) min	Yes
PN-RD	385、405nm	100%	3 (2,8) min	Yes
PN-TEMP	385、405nm	100%	10 (5,15) min	Yes
PN-SG	385、405nm	80%	3 (1,8) min	Yes
PN-CAST	385、405nm	100%	3 (1,8) min	Yes
PN-WM	385、405nm	100%	3 (1,5) min	Yes
PN-GM	385、405nm	100%	10s (5s, 30s)	Yes
PN-Try-in	385、405nm	100%	10 (5,15) min	Yes
PN-Denture	385、405nm	100%	15 (10,20) min	Yes

*UV02 is a special equipment for dentistry. Long-time exposure of general consumer resins on the market may cause the risk of model cracking.

CD-X3

Simple operation, one-click cleaning



SPECIFICATIONS	CD-X3
Machine properties	Ultrasonic Cleaning
Tank size	240×135×100(L*W*H)mm
Machine size	265×160×225(L*W*H)mm
Volume	3L
Ultrasonic frequency	40kHz
Ultrasonic power	120W
Heating power	100W
Package size	310×210×280mm
N.W.	3.2KG
G.W.	3.6KG



Before cleaning



After cleaning

Ortho model resin

Temperature resistant

● yellow ● beige ● gray , customizable



Learn more



SPECIFICATIONS	PN-Model	
Hardness	ASTM D2240	D85-90
Flexural modulus	ASTM D790	1400-1800MPa
Flexural strength	ASTM D790	70-90MPa
Elongation at break	ASTM D638	10-15%
Heat deflection temperature	ASTM D648@66PSI	75-85°C
Cytotoxicity	ISO 10993-5	
Allergenicity	ISO 10993-10	
Irritant	ISO 10993-10	

Machine model	Number of layouts (regular size)	1KG resin printable quantity	Printing time (100µm)	Printing time (50µm)
DJ89PLUS	8-10	≥ 80	23min	44min
D158/D160	4-5	≥ 80	17min	28min
D150	2-3	≥ 80	15min	28min
D136	15-17	≥ 80	41min	72min

Ortho model resin 2.0

Cost-effective

● yellowish brown ● gray , customizable



Learn more



SPECIFICATIONS	PN-Model 2.0	
Hardness	ASTM D2240	D85-90
Flexural modulus	ASTM D790	1200-1600MPa
Flexural strength	ASTM D790	80-95MPa
Tensile modulus	ASTM D638	600-1000MPa
Tensile strength	ASTM D638	40-50MPa
Heat deflection temperature	ASTM D648@66PSI	75-85 C

Machine model	Number of layouts (regular size)	1KG resin printable quantity	Printing time (100µm)	Printing time (50µm)
DJ89PLUS	8-10	≥ 80	23min	44min
D158/D160	4-5	≥ 80	17min	28min
D150	2-3	≥ 80	15min	28min
D136	15-17	≥ 80	41min	72min

Removable die model resin

Scratch resistance

● wheat complexion ● gray , customizable



Learn more



SPECIFICATIONS	PN-RD	
Hardness	ASTM D2240	D85-90
Flexural modulus	ASTM D790	1500-2000MPa
Flexural strength	ASTM D790	60-80MPa
Elongation at break	ASTM D638	10-15%
Cytotoxicity	ISO 10993-5	
Allergenicity	ISO 10993-10	
Irritant	ISO 10993-10	

Machine model	Number of layouts (regular size)	1KG resin printable quantity	Printing time (100µm)	Printing time (50µm)
DJ89PLUS	10-11	≥ 140	43min	77min
D158/D160	4-5	≥ 120	43min	70min
D150	4	≥ 150	29min	56min
D136	18-19	≥ 80	47min	87min

Temporary restoration resin

A1/A2/A3/B1/BL1

● A1 ● A2 ● A3 ● B1 ● BL1 , customizable



Learn more



SPECIFICATIONS	PN-Temp	
Hardness	ASTM D2240	D85-90
Flexural modulus	ASTM D790	2000-3000MPa
Flexural strength	ASTM D790	100-140MPa
Tensile modulus	ASTM D638	1100-1500MPa
Tensile strength	ASTM D638	65-85MPa
Elongation at break	ASTM D638	10-15%
Water absorption	ASTM D570	<1.0%
Cytotoxicity	ISO 10993-5	
Allergenicity/Irritant	ISO 10993-10	

Machine model	Number of layouts (regular size)	1KG resin printable quantity	Printing time (100µm)	Printing time (50µm)
DJ89PLUS	11-12	≥ 300	45min	81min
D158/D160	6-7	≥ 265	31min	60min
D150	3-4	≥ 280	38min	74min

Surgical guide resin

High transparency

○ Transparent



Learn more



SPECIFICATIONS	PN-SG	
Hardness	ASTM D2240	D75-85
Tension strength	ASTM D638	40-60MPa
Elongation at Break	ASTM D638	10-15%
Flexural Strength	ASTM D790	100-120MPa
Cytotoxicity	ISO 10993-5	
Allergenicity	ISO 10993-10	
Irritant	ISO 10993-10	

Machine model	Number of layouts (regular size)	1KG resin printable quantity	Printing time (100μm)	Printing time (50μm)
DJ89PLUS	10-11	≥ 180	44min	79min
D158/D160	3-4	≥ 150	39min	74min
D150	3-4	≥ 150	35min	68min
D136	15-16	≥ 195	50min	90min

Dental casting resin

Residue free

● cherry red ● green



Learn more



SPECIFICATIONS	PN-Cast	
Hardness	ASTM D2240	D80-85
Flexural modulus	ASTM D790	1500-2000MPa
Flexural strength	ASTM D790	45-65MPa
Bakeout temperature	/	1.5h@850°C

Machine model	Number of layouts (regular size)	1KG resin printable quantity	Printing time (100μm)	Printing time (50μm)
DJ89PLUS	28-29	≥ 600	34min	60min
D158/D160	11-12	≥ 550	27min	52min
D150	10-11	≥ 550	27min	52min
D136	45-48	≥ 600	37min	66min

Water-washable dental resin

Water-washable

● dark wheat skin , customizable



Learn more



SPECIFICATIONS	PN-WM	
Hardness	ASTM D2240	D85-90
Flexural modulus	ASTM D790	1000-1500MPa
Flexural strength	ASTM D790	60-75MPa
Tensile modulus	ASTM D638	600-1000MPa
Tensile strength	ASTM D638	40-55MPa
Elongation at break	ASTM D638	10-15%
Heat deflection temperature	ASTM D648@66PSI	75-80 °C

Machine model	Number of layouts (regular size)	1KG resin printable quantity	Printing time (100μm)	Printing time (50μm)
DJ89PLUS	5-6	≥ 80	29min	44min
D158/D160	2-3	≥ 80	32min	61min
D150	2-3	≥ 80	30min	55min
D136	11-12	≥ 100	35min	62min

Gingiva resin

Excellent elasticity

● gingival red



Learn more



SPECIFICATIONS	PN-GM	
Hardness	ASTM D2240	A30-50
Tensile strength	ASTM D 412	8-15MPa
Elongation at break	ASTM D 412	300-400%
Tear strength	ASTM D 624	12-18kN/m

Machine model	Number of layouts (regular size)	1KG resin printable quantity	Printing time (100μm)	Printing time (50μm)
DJ89PLUS	29-30	≥ 1000	34min	59min
D158/D160	10-12	≥ 1100	30min	57min
D150	7-8	≥ 700	30min	57min
D136	40-42	≥ 1100	40min	71min

Try-in resin

Wear and use for a short period (1 month)

A2 , customizable



Learn more



SPECIFICATIONS PN-Try-in

Hardness	ASTM D2240	D85-90
Flexural modulus	ASTM D790	1800-2500MPa
Flexural strength	ASTM D790	80-100MPa
Tensile modulus	ASTM D638	600-900MPa
Tensile strength	ASTM D638	55-65MPa
Elongation at break	ASTM D638	12-16%
Water absorption	ASTM D570	<1.0%
Cytotoxicity	ISO 10993-5	
Allergenicity/Irritant	ISO 10993-10	

Machine model	Number of layouts (regular size)	1KG resin printable quantity	Printing time (100µm)	Printing time (50µm)
DJ89PLUS	5-6	≥ 60	55min	75min
D158/D160	2-3	≥ 45	40min	70min
D150	2-3	≥ 45	40min	67min

Suggested table of printing parameters for D158 / D160

Resin name	Layer thickness (s)	Initial exposure time (s)	Exposure time (s)	Lift height (mm)	Motor speed (mm/s)	Lights off delay (s)	Bottom layer (layer)
PN-model	0.05	40	2.3	7	7	1	1
PN-model 2.0	0.05	30	2.3	7	7	1	1
PN-RD	0.05	40	2.3	7	5	1, 4 (full model)	1
PN-TEMP	0.05	40	2.1	7	5	1	2
PN-SG	0.05	40	2.9	7	5	1	2
PN-CAST	0.05	40	2.8	7	5	1	2
PN-WM	0.05	30	1.9	7	7	1	1
PN-GM	0.05	15	2.5	7	2	1	1
PN-Try-in	0.05	40	2.2	7	5	1	2
PN-Denture	0.05	40	2.1	7	5	1	2

Denture base resin

Can be worn for a long time (1 to 3 years)

red



Learn more



SPECIFICATIONS PN-Denture

Hardness	ASTM D2240	D85-90
Flexural modulus	ASTM D790	3000-4000Mpa
Flexural strength	ASTM D790	130-150Mpa
Tensile modulus	ASTM D638	1500-2000MPa
Tensile strength	ASTM D638	80-100MPa
Elongation at break	ASTM D638	25-30%
Water absorption	ASTM D570	<1.0%
in vitro cytotoxicity	ISO 10993-5	
irritation	ISO 10993-23	
skin sensitization	ISO 10993-10	
pyrogen / systemic toxicity	ISO 10993-11	
genotoxicity, carcinogenic and reproductive toxicity	ISO 10993-3	

Machine model	Number of layouts (regular size)	1KG resin printable quantity	Printing time (100µm)	Printing time (50µm)
DJ89PLUS	5-6	≥ 60	55min	75min

Suggested table of printing parameters for D150

Resin name	Layer thickness (s)	Initial exposure time (s)		Exposure time (s)		Lift height (mm)		Motor speed (mm/s)		Lights off delay (s)		Bottom layer (layer)	
		12000	20000	12000	20000	12000	20000	12000	20000	12000	20000	12000	20000
PN-model	0.05	10-25	10-15	1.8	0.8	8	4	1	1	2	3		
PN-model 2.0	0.05	10-25	10-15	2	0.9	8	4	1	1	2	3		
PN-RD	0.05	10-25	10-15	2.2	1.1	8	4	1, 4 (full model)		2	3		
PN-TEMP	0.05	15-25	20-30	2.2	1.2	8	4	2	2	3	3		
PN-SG	0.05	20-25	25-35	2.5	2	8	4	3	3	3	3		
PN-CAST	0.05	20-25	15-25	2.4	1.1	8	4	3	2	3	3		
PN-WM	0.05	30-35	25-30	1.2	0.6	8	4	1	2	3	3		
PN-GM	0.05	20-30	15-25	2	0.9	8	4	3	3	3	3		
PN-Try-in	0.05	15-25	10-20	2	0.9	8	4	1	2	3	3		
PN-Denture	0.05	15-25	10-20	2	0.9	8	4	1	2	3	3		

Suggested table of printing parameters for DJ89PLUS							
Resin name	Layer thickness (s)	Initial exposure time (s)	Exposure time (s)	Lift height (mm)	Motor speed (mm/s)	Lights off delay (s)	Bottom layer (layer)
PN-model	0.05	40	2.8	8	7	1	1
PN-model 2.0	0.05	30	2.8	8	7	1	1
PN-RD	0.05	40	2.8	8	5	1, 4 (full model)	1
PN-TEMP	0.05	40	3.2	8	5	1	2
PN-SG	0.05	40	3.4	8	5	1	2
PN-CAST	0.05	40	4.5	8	5	1	2
PN-WM	0.05	30	1.9	8	5	1	1
PN-GM	0.05	20	3.2	8	2	1	1
PN-Try-in	0.05	40	3.2	8	5	1	2
PN-Denture	0.05	40	3.3	8	5	1	2

Suggested table of printing parameters for DJ68							
Resin name	Layer thickness (s)	Initial exposure time (s)	Exposure time (s)	Lift height (mm)	Motor speed (mm/s)	Lights off delay (s)	Bottom layer (layer)
PN-model	0.05	30	2.3	6	7	1	1
PN-model 2.0	0.05	30	2.3	6	7	1	1
PN-RD	0.05	30	2.1	6	5	1, 5 (full model)	1
PN-TEMP	0.05	30	3.2	6	5	1	2
PN-SG	0.05	30	3.6	6	5	1	2
PN-CAST	0.05	30	4.5	6	5	1	2
PN-WM	0.05	30	1.9	6	7	1	1
PN-GM	0.05	20	3.7	6	2	1	1
PN-Try-in	0.05	30	3.2	6	5	1	2
PN-Denture	0.05	30	2.2	6	5	1	2

WORRY-FREE SERVICE SYSTEM

Comprehensive service and technical support

3D printer operation

Slicing software operation

3D printing technology training



Provide 7*12 hours online technical support service



Free upgrade and inspection of product software failures



Product failure free detection



The product provides a one year warranty from the date of arrival



24-hour after-sales service mailbox
after@piocreat3d.com



Professional after sales expert to follow up